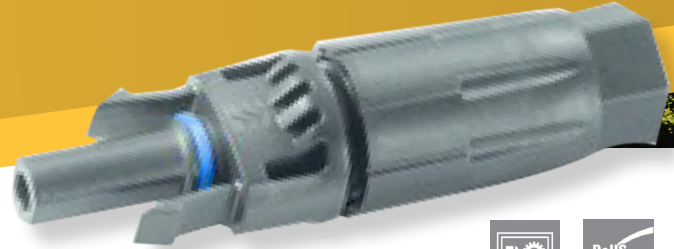



# BUGH WM4 C BT



## WM4 C PHOTOVOLTAIC CONNECTORS

- One crimp contact for 4mm<sup>2</sup> and 6mm<sup>2</sup> cables.
- TÜV approval according to the latest standard DIN EN 50521.
- Can be loaded with a rated current of up to 35A.

GENERAL ORDERING DATA	
Type	BUGH WM4 C BT
Order No.	<a href="#">1530690000</a>
Version	Photovoltaics, Plug-in connector, Socket connector
GTIN (EAN)	4050118335347
Qty.	100 pc(s).

TECHNICAL DATA		
DIMENSIONS AND WEIGHTS	Net weight	11.6g
	Approvals	TÜV (DIN EN 50521)
TECHNICAL DATA	Cable type	2 Pfg1169/08.07, EN 50618:2014
	Conductor cross-section, max.	6mm <sup>2</sup>
	Conductor cross-section, min.	4mm <sup>2</sup>
	External thread	M 16
	Outer cable diameter, max.	7mm
	Outer cable diameter, min	5.5mm
	Pollution severity	2
	Protection degree	IP65, IP67, IP2x open
	Rated current	35A
	Rated voltage	1500V DC (IEC)
CLASSIFICATIONS	ETIM 6.0	EC002928
	ETIM 7.0	EC002928
	eClass 9.0	22-57-92-03
	eClass 9.1	27-44-01-07
	eClass 10.0	27-44-01-07
APPROVALS	Approvals	
	ROHS	Conform
DOWNLOADS	Engineering Data	<a href="#">EPLAN, WSCAD</a>
	Engineering Data	<a href="#">STEP</a>
	User Documentation	<a href="#">BPZL WM4C LANG</a>